

Year 6 Maths Week 6

1.) 175

2.) $\frac{2}{8}$ or $\frac{1}{4}$

$$\begin{array}{r} 3.) \quad 5083 + \\ \quad \quad 689 \\ \hline 5772 \\ \quad \quad 11 \end{array}$$

4.) 144

$$\begin{array}{r} 5.) \quad 68 \times \\ \quad \quad 6 \\ \hline 408 \\ \quad \quad 4 \end{array}$$

$$\begin{array}{r} 6.) \quad 4.710 + \\ \quad \quad 0.005 \\ \hline 4.715 \end{array}$$

$$\begin{array}{r} 7.) \quad 3992 + \\ \quad \quad 5409 \\ \hline 9401 \\ \quad \quad 111 \end{array}$$

$$\begin{array}{r} 8.) \quad 280972 - \\ \quad \quad 78209 \\ \hline 222763 \end{array}$$

9.) 50

10.) 3490

$$\begin{array}{r} 11.) \quad 7830 - \\ \quad \quad 0.98 \\ \hline 77.42 \end{array}$$

12.) $\frac{1}{5} + \frac{1}{2} = \frac{2}{10} + \frac{5}{10} = \frac{7}{10}$

13.) 539×47


$$\begin{array}{r} 3773 + \\ 21560 \\ \hline 25333 \end{array}$$

11

$$\begin{array}{r} 117 \\ 53 \overline{) 53201} \\ \underline{53} \quad \downarrow \\ 890 \\ \underline{53} \quad \downarrow \\ 371 \end{array}$$

- 53
- 106
- 159
- 212
- 265
- 318
- 371

15.) $\frac{3}{5} \times \frac{1}{3} = \frac{3}{15}$ or $\frac{1}{5}$



16.) $\frac{7}{12} \div 2 = \frac{7}{12} \times \frac{1}{2} = \frac{7}{24}$

change the action (with an arrow pointing up to the division sign)
flip the fraction (with an arrow pointing to the 1/2)

$$\begin{array}{r}
 17) \quad 5.66x \\
 \quad \quad 4 \\
 \hline
 22.64 \\
 \hline
 22
 \end{array}$$

→ 10% + 5%

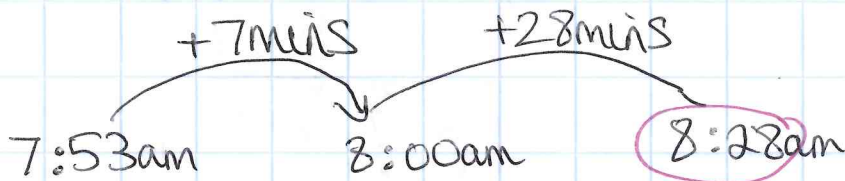
$$18) \quad 15\% \text{ of } 1015$$

$$10\% \text{ of } 1015 = 1015 \div 10 = 101.5$$

$$5\% \text{ of } 1015 = 10\% \div 2 = 50.75$$

$$15\% \text{ of } 1015 = 101.5 + 50.75 = 152.25$$

19)



20)

$$\begin{array}{r}
 3.99 \\
 0.59 + \\
 0.79 \\
 \hline
 5.37 \\
 \hline
 22
 \end{array}$$

$$\begin{array}{r}
 \cancel{9} \cancel{9} \cancel{0} \\
 \times \cancel{9} \cancel{0} \cancel{6} \\
 \hline
 5.37 \\
 \hline
 4.63
 \end{array}$$

$$\text{£}4.63$$